

ELFA LEGAL FORUM



**HYBRID
EVENT!**

MAY 7-9, 2023

MARRIOTT SANIBEL HARBOUR RESORT AND SPA • FORT MYERS, FL

Providing Legal Direction and Valuable Counsel for Over 50 Years.

The PREMIER EVENT for attorneys serving the equipment leasing and finance industry.
The best place to OBTAIN UPDATES ON LEGAL ISSUES that impact your company.
UNMATCHED NETWORKING OPPORTUNITIES with your peers in the industry.

Complete conference details and registration information can be found here: www.elfaonline.org/events/2023/LF/.

Conference
Qualifies for
CLE Credits

ELFA

EQUIPMENT LEASING AND FINANCE ASSOCIATION
Equipping Business for Success

Highlights at the 2023 Legal Forum:

- Leases in Default 101
- Climate Finance and ESG
- Fraud
- Legal Update
- ELFA State of the Industry and State of the Association
- Mental Health and Wellness Roundtable
- Bankruptcy and Workouts
- Syndications and Structuring
- What you Need to Know About 1071
- Clause by Clause
- State Regulatory Update
- Captive and Vendor Finance Roundtable
- Practical Applications of State Disclosure Law
- The World of Digital Assets – a Primer
- Hot Topics Trivia for Equipment Finance Lawyers
- Credit Support Devices
- Canadian Cross Border
- Ethics Issues for Equipment Finance Lawyers

Who Should Attend

Internal and external counsel of all experience levels will benefit from this Forum.

NEW THIS YEAR:

Attend In-Person or Virtually

ELFA is offering the Legal Forum as a hybrid event! You have the flexibility to choose the option that works best for you:

In-Person: Attend the Legal Forum in-person to connect with colleagues in Fort Myers. Onsite attendees will enjoy unparalleled opportunities to network, do business and uncover ideas to help your business grow. All in person attendees will also have access to attend virtually to education sessions as well.

Virtual: Attend the Legal Forum remotely to hear from industry experts from the comfort of your home or office. Watch livestreams of high-quality educational sessions and top-notch keynote speakers when and where it's most convenient for you—for a discounted price.

Sponsorship Opportunities

Sponsorships provide invaluable exposure for your company. Contact Steve Wafalosky at steve@cvmpmedia.com or 440-247-1060 if you are interested in learning more about sponsoring any of the Forum events.

2023 ELFA LEGAL COMMITTEE

Scott Adams, Chair

VOLVO FINANCIAL SERVICES

Jeannette Dannenfelser, Immediate Past Chair

SUMMIT FUNDING GROUP, INC.

Dominic Liberatore, Subcommittee Coordinator

DLL

Vince Borst

ROBBINS DIMONTE, LTD.

Jennifer Witherell Crastz

HEMAR, ROUSSO & HEALD, LLP

Alexandra "Lexie" Dressman, CLFP

HUNTINGTON EQUIPMENT FINANCE

Julia Gavrilov

MORITT HOCK AND HAMROFF LLP

Arlene N. Gelman

VEDDER PRICE P.C.

Barbara Goodstein

MAYER BROWN LLP

Robert Hornby

CHIESA SHAHINIAN & GIANTOMASI PC

Brian Kestenbaum

LEAF COMMERCIAL CAPITAL INC.

Alexis Levine

BLAKE, CASSELS & GRAYDON LLP

David T. Miele, Esq.

CITIZENS ASSET FINANCE, INC.

Molly Simon, CLFP

DLL

Mary Ann Stathopoulos, Esq.

CISCO SYSTEMS CAPITAL CORPORATION

Equipment Leasing and Finance Association Staff Liaisons

Ralph Petta

EQUIPMENT LEASING AND FINANCE ASSOCIATION

Lisa Ramirez

EQUIPMENT LEASING AND FINANCE ASSOCIATION



Thank you to our Conference Sponsors!

Online Attendee Handouts sponsored by:



Mobile App sponsored by:



Hotel Key Cards sponsored by:



Conference Lanyards sponsored by:



Eco-Friendly Conference Bags sponsored by:



Conference Beverage Sleeves sponsored by:



SUNDAY, MAY 7th

2:00 – 6:00pm **Attendee Registration**

3:00 – 4:00pm **BREAKOUT AND ROUNDTABLE SESSIONS**

- **Leases Vs Loans 101**
Location: Everglade A

An equipment lease and finance attorney must understand how an equipment lease is defined and the way it is treated. They must also understand what an equipment lease is not. This introductory session will discuss the various definitions of a lease, from a tax, accounting, and legal perspective. It will also focus on what happens when a lease is not a lease, but rather a secured transaction.

MOLLY SIMON
Senior Corporate Counsel
DLL

CARLA POTTER
Partner
Cassels Brock & Blackwell LLP

BENJAMIN COURT

Partner

STINSON LLP

JANE HOGAN

Senior Corporate Counsel

U.S. Bank Equipment Finance

- **Motor Vehicle Roundtable**

Location: Everglade B

This panel of inhouse and outside counsel with many years of experience in motor vehicle financing are looking forward to an interactive discussion which will touch on such topics as: the age old issue of when your titled vehicles may constitute inventory and the pitfalls in floorplan financing; cross-border issues impacting the trucking industry from near-shoring arrangements; fixture issues to be considered when financing e-vehicle infrastructure; and a primer and case update on the Graves amendment and Lessor vicarious liability. The panel will leave time to address any questions from the audience on these topics, or any other motor vehicle financing questions/issues.

DAVID MIELE, ESQ.

Chief Administrative Officer

Citizens Asset Finance, Inc.

BONNIE MICHAEL

Shareholder

Baker, Donelson, Bearman, Caldwell & Berkowitz PC

BILL WILSON

Associate General Counsel & Vice President

BMO Transportation Finance

ANN PILLE

Partner

Reed Smith LLP

- **UCC + More**

Location: Caloosa A-B

BARBARA GOODSTEIN

Partner

Mayer Brown LLP

THOMAS HOTARD

VP - Program Management and Contracts

Midland Equipment Finance

RUTHANNE HAMMETT

Partner

Thompson Coburn LLP

EDWARD GROSS

Shareholder
Vedder Price P.C.

- **Inside Outside Counsel Management Roundtable**

Location: Everglade C

This Roundtable will discuss enhancing communication and collaboration between Inside and Outside Counsel.

MARY ANN STATHOPOULOS, ESQ
Senior Corporate Counsel
Cisco Systems Capital Corporation

VINCE BORST
Shareholder
Robbins DiMonte, Ltd.

4:00 – 4:15pm

BREAK

Location: Everglade Ballroom Foyer

4:15 – 5:15pm

BREAKOUT AND ROUNDTABLE SESSIONS

- **Air, Rail, Marine Roundtable**

Location: Everglade B

Our session will include an update of legal developments relating to financings of each of these transportation asset types, and an opportunity for the attendees to engage in discussions with the panelists and the other attendees regarding related matters of interest.

EDWARD GROSS
Shareholder
Vedder Price P.C.

EILEEN BROWN
Partner
Thompson Coburn LLP

JASON HUFF
Partner
Smith, Gambrell & Russell, LLP

CONOR GAUGHAN
Associate
Vedder Price P.C.

- **Leases in Default 101**

Location: Everglade A

What happens when a lessee defaults on an equipment lease? This introductory session will discuss the various defaults and remedies that may be available to a lessor. It will also discuss what happens when a defaulted lease is not a lease, but rather a secured transaction.

LISA PETERS

Partner

Kutak Rock LLP

MICHAEL GALLO

Assistant General Counsel & SVP

LEAF - M&T Bank

TROY KEPLER

Corporate Counsel

Channel

ROBERT HORNBY

Member of the Firm

Chiesa Shahinian & Giantomasi PC

- **Clean Energy and ESG**

Location: Caloosa A-B

BREAKING NEWS! Investment in clean energy is expected to reach \$4 Trillion; Learn how this is a major equipment finance opportunity. More News: Hear about why many ABS issuers are planning to provide investors with ESG disclosure: Environmental, Social, Governance. All this in only one hour!

STEPHEN WHELAN

Partner

Blank Rome LLP

PATRICIA VOORHEES

Director, Fintech Strategic Consulting and M&A Advisory

The Alta Group

- **When Borrowers, Brokers and Vendors Do Bad Things: Fraud Schemes and Other Challenges for Lenders**

Location: Orchid

JENNIFER WITHERELL CRASTZ

Partner

Hemar, Rousso & Heald, LLP

PAUL BENT

Senior Managing Director

The Alta Group LLC

5:15 – 6:00pm

Newcomers Reception

Location: Palm Pool Deck

6:00 – 7:30pm

Opening Reception

Location: Palm Pool Deck

Sponsored by Darcy & Devassy PC



MONDAY, MAY 8th

6:00 – 6:50am

Yoga

Location: Island Room

7:00 – 8:00am

BREAKFAST

Location: Everglade Ballroom Foyer

8:00 – 9:30am

General Session

Welcoming Remarks

State of the Industry Report

Location: Everglade B-C Ballroom

RALPH PETTA

President and CEO

Equipment Leasing and Finance Association

SCOTT ADAMS

Vice President Legal & Compliance, North America

Volvo Financial Services

Edward A. Groobert Award for Legal Excellence, 2023

Presented to:

KENNETH WEINBERG

Partner

Rimon, P.C.

MOORARI SHAH

Partner

Sheppard Mullin Richter & Hampton LLC

Legal Update Part 1

A timely discussion of recent case law and statutory developments covering bankruptcy, the Uniform Commercial Code, and creditor litigation.

ARLENE GELMAN

Shareholder

Vedder Price P.C.

DEBBIE DEVASSY BABU

Shareholder

Darcy & Devassy PC

JULIA GAVRILOV
Partner
Moritt Hock & Hamroff LLP

BRITTANY OGDEN
Partner
Quarles & Brady LLP

9:30 – 9:45am

BREAK
Location: Everglade Ballroom Foyer

9:45 – 10:45am

GENERAL SESSION
Diversity, Equity & Inclusion: Best Practices Through a Legal Lens
Location: Everglade B-C Ballroom

This engaging session will examine the latest market trends within member organizations in the equipment finance industry, provide insight into challenges being faced in furthering diversity and inclusion efforts and highlight best practices to help move your organization toward its diversity goals while mitigating risk.

JULIA GAVRILOV
Partner
Moritt Hock & Hamroff LLP

DOMINIC LIBERATORE
Deputy General Counsel
DLL

MELISSA DONALDSON
Senior Vice President and Chief Diversity Officer
Wintrust Financial Corporation

MIRNA CARDONA
Vice President and Corporate Counsel
Frost Bank

10:45 – 11:00am

BREAK
Location: Everglade Ballroom Foyer

11:00 – Noon

BREAKOUT SESSIONS

- **We're In This Together: Why Mindfulness and Wellbeing Are Important to the Ethical Practice of Law for Every Equipment Leasing and Finance Attorney**
Location: Orchid Room

Presented to you by the Rising Lawyers Subcommittee

To be a good lawyer, you have to be a healthy lawyer. But we are falling short when it comes to well-being, negatively impacting a profession dedicated to client service and dependent on the public trust. Join us as we hear from Professor Scott Rogers, an internationally recognized leader in mindfulness in law and the Director of the

country's first Mindfulness in Law Program, at the University of Miami School of Law. Professor Rogers utilizes neuroscience research to explore the efficacy of mindfulness training on attention, emotional regulation and working memory in high stress professions and draws upon this expertise to infuse mindfulness into the ethical practice of law. Come learn how mindfulness can help you to help your clients.

SCOTT ROGERS, M.S., J.D.

Director, Mindfulness in Law Program
University of Miami School of Law

ROBERT HORNBY

Member of the Firm
Chiesa Shahinian & Giantomasi PC

- **Bankruptcy and Workouts in a Post-Pandemic Economy**

Location: Everglade B-C

JENNIFER WITHERELL CRASTZ

Partner
Hemar, Rousso & Heald, LLP

VINCE BORST

Shareholder
Robbins DiMonte, Ltd.

MARC HAMROFF

Managing Partner
Moritt Hock & Hamroff LLP

KENNETH PETERS

Partner
Dressler & Peters, LLC

- **Syndications and Structuring**

Location: Caloosa A-B

This experienced panel of inhouse and outside counsel will delve into issues beyond the plain vanilla syndication of an equipment finance transaction and explore such topics as: how the current banking landscape may change how you look at fiscal agency provisions and the financial profile of an equity investor in a leveraged lease; a primer on lease securitizations; the use of referral agreements as contrasted to outright assignments; and the use of participation agreements (when they make sense and handling unusual collateral situations). Of course, the panel will leave time for Q&A to address any other syndication/structuring questions or issues from the audience.

DAVID MIELE, ESQ.

Chief Administrative Officer
Citizens Asset Finance, Inc.

ERIC GAZIN

General Counsel
Verdant Commercial Capital LLC

ANGELA ULUM
Partner
Mayer Brown LLP

MERRICK BENN
Partner
Womble Bond Dickinson (US) LLP

Noon – 1:00pm **Lunch**
Location: Garden Room

1:00 – 2:00 pm **General Session**
1071 and What this Means for Your Company/Practice
Location: Everglade B-C Ballroom

This session will provide an update on the status of 1071 of Dodd Frank, including some key highlights, the effective date and some practical implications to consider when designing your implementation plan. The session will include ample time for questions and discussions with the attendees.

ANDY FISHBURN
VP, Federal Government Relations
Equipment Leasing and Finance Association

DOMINIC LIBERATORE
Deputy General Counsel
DLL

MOORARI SHAH
Partner
Sheppard Mullin Richter & Hampton LLC

2:00pm - 2:15 **BREAK**
Location: Everglade Ballroom Foyer

2:15 – 3:15pm **BREAKOUT SESSIONS AND ROUNDTABLES**

- **State Regulatory Update**
Location: Everglade B-C Ballroom

California and New York have now issued final regulations implementing their respective truth-in-lending disclosure laws. While compliance in California (and Utah) is now required for qualifying commercial financing transactions, New York's law will not take effect until August 1, 2022.

The discussion will include a review of the important changes to New York's final regulations, including impactful reversals from the initial regulations relating to bank subsidiary exemptions and jurisdictional nexus requirements, as well as the (sometimes substantial) differences between the laws. Panelists will discuss key issues arising from

these laws relating to the equipment finance industry — including when to disclose broker fees, blind discounting and assignment of transactions requiring disclosures to exempt entities (i.e. banks) — and how finance companies are approaching these and other compliance issues in California.

Additionally, Scott Riehl, ELFA's VP of State Government Relations, will provide an update on the growing number of other states (including Connecticut, Kansas, Georgia, Illinois, New Jersey, Maryland and more) which are pushing new disclosure legislation, as well as newly proposed legislation/regulations in California, New York and Nevada relating to licensure and reporting requirements for commercial financing transactions.

ROBERT HORNBY

Member of the Firm
Chiesa Shahinian & Giantomasi PC

SCOTT RIEHL

Vice President, State Government Relations
ELFA

MOORARI SHAH

Partner
Sheppard Mullin Richter & Hampton LLC

ROBERT COHEN

Partner
Moritt Hock & Hamroff LLP

- **Captive and Vendor Finance Roundtable**

Location: Everglade A

This Roundtable will discuss information sharing and critical thinking about opportunities, challenges, and the pressure for change in the current market.

MARY ANN STATHOPOULOS, ESQ

Senior Corporate Counsel
Cisco Systems Capital Corporation

DOUG HIRAI

General Counsel
Mitsubishi HC Capital America

MICHELLE A. HALVERSON

General Counsel
GreatAmerica Financial Services

3:15 – 3:30pm

BREAK

Location: Everglade Ballroom Foyer

3:30 – 4:30pm

BREAKOUT SESSIONS AND ROUNDTABLES

- **State Disclosure Laws: Tales from the Front Lines**

Location: Everglade B-C Ballroom

In this session, the panelists will discuss real-world issues faced by in-house legal departments complying with State Disclosure Laws.

BRIAN KESTENBAUM

Senior Vice President and General Counsel

LEAF Commercial Capital Inc.

BOB ERNST

Verdant Commercial Capital LLC

THOMAS HOTARD

VP - Program Management and Contracts

Midland Equipment Finance

- **Blockchain and Digital Assets – What Are They and Why They Might be Relevant to You**

Location: Caloosa A-B

Interest and investment in blockchain technology continues, despite the challenges and headlines in digital asset markets over the past 12 months. The blockchain technology that is the basis for digital assets has possibilities that are just beginning to be explored and developments – legal and otherwise – in the past several years that could make this technology more usable and relevant for a wide variety of businesses.

In this discussion, we will provide some high-level background – with pictures! – on blockchain technology and how it works. We will also discuss some reasons why equipment leasing and finance practitioners may be interested in this technology and its possible uses.

BARBARA GOODSTEIN

Partner

Mayer Brown LLP

JOE CASTELLUCCIO

Partner

Mayer Brown LLP

4:30 – 4:45pm

BREAK

Location: Everglade Ballroom Foyer

4:45 – 5:45pm

General Session

It's All Legal! Trivia Game with Drinks

Location: Everglade B-C Ballroom

Lead by our returning host, Jeanette Dannenfels, "It's All Legal" trivia game includes a variety of questions, all lightly based on legal-related topics. Come prepared for two rounds of competitive, in-person fun with your ELFA Legal Forum friends. Prizes (and

bragging rights) will be awarded to the top three participants. NEW THIS YEAR: There will be drinks available for the contestants.

IMPORTANT NOTE: To participate in the game, please bring with you a PERSONAL ELECTRONIC DEVICE (e.g., your cell phone) to the session. We will be using the Kahoot! Platform to play.

JEANETTE DANNENFELSER
Vice President and General Counsel
Summit Funding Group, Inc.

MOLLY SIMON
Senior Corporate Counsel
DLL

EILEEN BROWN
Partner
Thompson Coburn LLP

5:45 – 6:15pm

Women in Leasing Reception
Location: Palm Pool Deck

Sponsored by Channel



6:15 – 7:30pm

Hosted Reception
Location: Palm Pool Deck

Sponsored by Latimer LeVay Fyock LLC



TUESDAY, MAY 9th

7:30 – 8:30am

BREAKFAST
Location: Everglade Ballroom Foyer

8:30 – 9:30am

General Session
Legal Update Part 2
Location: Everglade B-C Ballroom

A timely discussion of recent case law and statutory developments covering bankruptcy, the Uniform Commercial Code, and creditor litigation.

Arlene Gelman

Shareholder
Vedder Price P.C.

C. LAWRENCE HOLMES
Principal
Offit Kurman

FRANK PERETORE
Member
CSG Law

BENJAMIN COURT
Partner
STINSON LLP

9:30 – 9:45am

BREAK
Location: Everglade Ballroom Foyer

9:45- 10:45am

BREAKOUT SESSIONS

- **Credit Support Devices**
Location: Everglade B-C Ballroom

This session will include a discussion among the panelists and the attendees regarding the various types of credit support devices, including guarantees, credit support agreements, letters of credit, control accounts and other types of additional collateral. The matters discussed with respect to these credit support devices will include the relevant strengths and weaknesses of each, and the related practical considerations, including why one device might be more or less appropriate in the context of a particular financing transaction.

CHARLES CROSS
Senior Lead Counsel
Wells Fargo Equipment Finance

BOB GEIS
Director / Assistant General Counsel, Equipment Finance
First Citizens Bank Equipment Finance

SCOTT CHAIT
Partner
Rimon, P.C.

SHARI BACSARDI
Partner
Womble Bond Dickinson (US) LLP

- **So You Want to do a Canadian Transaction and then Securitize it in the US**
Location: Caloosa A-B

This session will focus on those matters which a US finance company or its Canadian subsidiary should consider when entering into a loan or lease with a Canadian obligor with a view that the transaction will be securitized in the United States. The session will be geared towards US finance professionals who have solid experience in equipment finance.

1. What are the options in structuring the transaction
2. Regulatory matters that need be considered
3. How to ensure that the transaction will fit into a securitization structure
4. Overview of certain tax matters that need be kept in mind
5. UCC/PPSA concerns in a securitization
6. Billing and collecting concerns
7. Canadian structuring issues for a US securitization

ADAM JACKSON

Partner

Blake, Cassels & Graydon LLP

JON FLEISHER

Partner

Cassels Brock & Blackwell LLP

- **UCC + More (Repeat)**

Location: Everglade A

BARBARA GOODSTEIN

Partner

Mayer Brown LLP

THOMAS HOTARD

VP - Program Management and Contracts

Midland Equipment Finance

RUTHANNE HAMMETT

Partner

Thompson Coburn LLP

EDWARD GROSS

Shareholder

Vedder Price P.C.

10:45 – 11:00am

BREAK

Location: Everglade Ballroom Foyer

11:00am – 12:00pm

General Session

Ethics Issues for Equipment Finance Lawyers

Location: Everglade B-C Ballroom

SCOTT ADAMS

Director Legal & Compliance, Global Senior Counsel

Volvo Financial Services

C. LAWRENCE HOLMES

Principal

Offit Kurman

RANDALL ARMENTROUT

Shareholder

Nyemaster Goode Law Firm

REGISTRATION AND GENERAL INFORMATION

Please register as far in advance as possible. Register by **Friday, April 21, 2023** to ensure that your name appears on the list of attendees.

Please note: you may also register for this conference via internet at www.elfaonline.org/events/2023/LF/.

Registration fees:

ELFA Member (1st Person):	\$1,355
Each additional ELFA Member representative:	\$1,225
*Non-Members:	\$2,715
*First Time Attendee:	\$1,160
Virtual Member:	\$295
Virtual Non-Member	\$295
Spouse/Companion Fee:	\$215
Committee Member Fee:	\$610
Speaker Fee:	\$610
Speaker Fee: (if attending only on the day of presentation/one-day only)	\$0

*First Time Attendee Fee

If at least one individual from your company is registered to attend this conference **at the full ELFA member rate**, and you have never previously attended the ELFA Legal Forum, you may register at 15% below the full ELFA member registration fee. This offer is good only to individuals from ELFA member companies who also reserve their accommodations at the Omni Shoreham HotelMarriott Sanibel Harbour Resort & Spa.

Speaker/Committee Registration Fee and Fee Policy

All speakers and committee members must complete and return the registration form. Speakers attending the entire conference pay half the registration fee (\$610). The fee is waived for speakers who are attending only on the day of their presentation. Committee members, regardless of length of stay at the conference, pay half the registration fee (\$610). Please make sure you check the appropriate box on the registration form. If you have questions regarding these policies, please contact Lisa Ramirez at lramirez@elfaonline.org.

Spouse/Companion Fee

A spouse/companion attending any portion of the conference or social functions must be registered and must pay the spouse/companion fee (\$215). Please mark the appropriate box on the registration form. If your spouse/companion is employed in leasing and wishes to attend any portion of the conference, the full attendee (member) registration fee is due.

Continuing Legal Education Credit

The ELFA is a recognized sponsor of continuing legal education with most State Bar Associations. Immediately following the ELFA Legal Forum, ELFA members will receive confirmation of their attendance which they can use to obtain continuing legal education credit.

Roundtable Discussions

When registering, remember to select the roundtables you would like to attend. Prior to the conference you will be sent an email asking for topics of discussion.

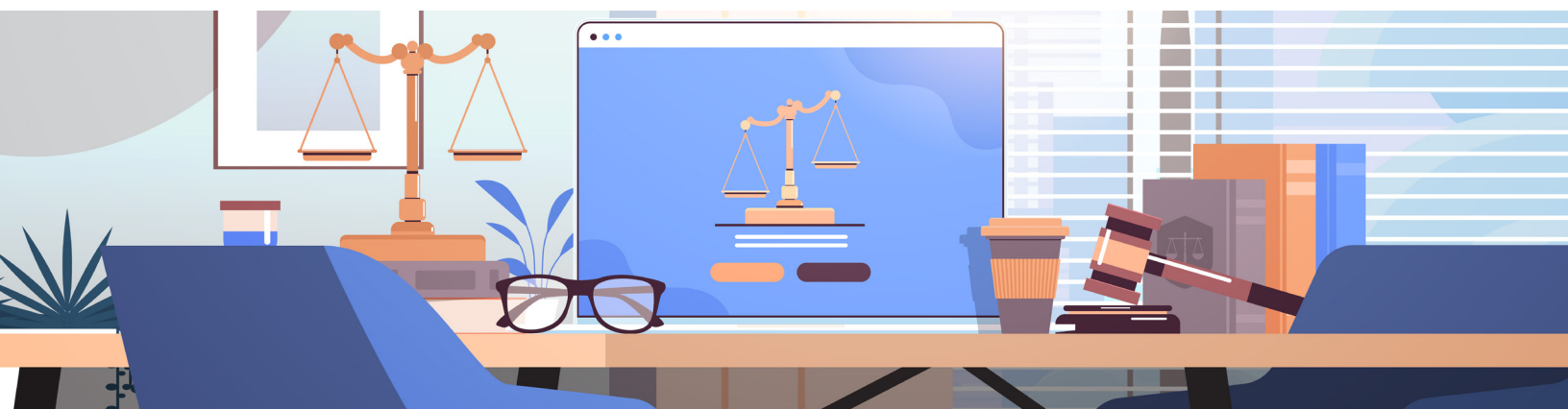
SPECIAL NETWORKING EVENT

WOMEN IN LEASING RECEPTION

For several years, women attorneys have been meeting informally to network with one another and share business experiences. This year's reception is scheduled from 5:30-6:15 pm on Monday, May 8th.

NOTE: If you would like to attend this reception, please check the appropriate box on the conference registration form.

No registration limit



Register On-Line

Go to www.elfaonline.org for information about this and other educational programs. Go to the Events & Training section for details on the agenda, speakers, location and registration information. You can register directly online via American Express, MasterCard, Discover, Diners Club or VISA on our secure server. You will receive a confirmation from the website.

Note: Registration online is highly encouraged. If you require a paper registration form please contact Janet Fianko at jfianko@elfaonline.org.

Cancellations & Substitutions

Cancellation Policy

- **Refund minus \$100:** Should you need to cancel, refunds will be processed less a \$100 administrative fee.
- **No refund:** No refunds of registration fees will be given for cancellations received on or after **Friday, April 21, 2023**.

Please Note: Cancellations by telephone will be accepted, but must be followed up with a letter that includes the name of the ELFA staff member who accepted the cancellation. This letter may be:

- Mailed to Janet Fianko at ELFA Headquarters:
1625 Eye Street, NW, Suite 850
Washington, DC 20006-1203
- Faxed to (202) 238-3457, Attn: Janet Fianko, or
- Emailed to Janet Fianko at jfianko@elfaonline.org

Substitutions

Substitutions for the entire program may be made at any time including on-site registration.

Membership Information

If you are interested in joining ELFA, please call Julie Benson at (202) 238-3432, or check the appropriate box on the registration form. You may also email Ms. Benson at jbenson@elfaonline.org.

Inquiries

If you have a question about this conference not related to registration, please call ELFA Professional Development at (202) 238-3400.

Email for registration inquiries:

jfianko@elfaonline.org

(Note: no registrations can be made by telephone)

Email for conference brochure:

rjordan@elfaonline.org

Sponsorship Opportunities

Sponsoring events and functions at ELFA meetings provides excellent exposure for your company. Contact Steve Wafalosky at steve@cvmpmedia.com or (440) 247-1060 if you are interested in becoming a sponsor for this important event:

Wi-Fi in meeting room	\$5,000
Mobile App	\$4,000
Electronic Materials	
Attendee Handouts	\$3,000
Conference Bag	\$4,000
Hotel Room Keys	\$4,000
Lanyard with company logo	\$4,000
Sunday Reception	\$3,500
Monday Reception	\$2,000
Pens with company logo	\$3,000
Coffee sleeves with company logo	\$3,000
Napkins with company logo	\$3,000
Monday Luncheon	\$2,500
Monday Continental Breakfast	\$2,000
Tuesday, Continental Breakfast	\$2,000
Women in Leasing Reception	\$2,000

Hotel Reservations:

A block of rooms has been reserved for this conference at the Marriott Sanibel Harbour Resort & Spa in Ft. Myers, FL, 17260 Harbour Pointe Drive Fort Myers, Florida 33908. A special group rate of \$229/night (Standard Room) is available for attendees. You may make your hotel reservations online at: <https://www.marriott.com/event-reservations/reservation-link.mi?id=1659719356335&key=GRP&app=resvlink>.

Phone-In Reservations:

You may make reservations by calling 800-767-7777. Be sure to tell the reservations clerk you will be attending the ELFA Legal Forum. Reservations should be guaranteed with a credit card and made before the cut-off date of **Friday, April 14, 2023**. After the cut-off date, rooms are on a first-come, first-served basis and possibly at a higher rate.

Getting There

Marriott Sanibel Harbour Resort is located 21.5 miles from Southwest Florida International Airport (RSW).

CONFERENCE COMPLIANCE

Please Note the Following

Photographs Taken at the Conference

Photographs of speakers and attendees may be taken at this conference. These may appear in ELFA publications or on the ELFA website. By registering for this conference, you authorize ELFA the right to use any photographs taken of you during the course of the Conference.

Attendee Contact Information

By registering for this conference, attendees authorize ELFA to share your contact information, including but not limited to email address and telephone number with other registered attendees, sponsors, and exhibitors.

For more information please contact Janet Fianko at jfianko@elfaonline.org.

ELFA CODE OF CONDUCT

Thank you for choosing to enhance your professional development by attending this ELFA conference. One of our goals is to ensure that we promote a safe and productive environment for all conference attendees.

We invite you to help us make each ELFA-sponsored conference and live event a place that is welcoming and respectful to all participants, regardless of race, gender, gender identity and expression, age, sexual orientation, disability, physical appearance, national origin, ethnicity,

political affiliation, or religion. We do not condone, nor will we tolerate harassment of our participants, including ELFA and facility staff, in any form—in person or online.

Examples of harassment include offensive comments, verbal threats or demands, sexualized images in public spaces, intimidation, stalking, harassing photography or recording, sustained disruption of sessions or events, and unwelcome physical contact or sexual attention.

We expect all participants—attendees, speakers, sponsors, volunteers, and staff—to follow the Code of Conduct during the conference. This includes conference-related social events at off-site locations and in related online communities and social media.

Participants asked to stop any harassing behavior are expected to comply immediately. Conference participants violating this Code of Conduct may be expelled from the conference without a refund, and/or prohibited from attending future ELFA events, at the discretion of ELFA.

Please bring any concerns to the immediate attention of the event staff, or contact Lisa Ramirez, ELFA Vice President of Business and Professional Development, at lramirez@elfaonline.org. You may also report violations by calling call +1 202-238-3414. Thank you for your help in keeping this and all ELFA events professional, welcoming, and respectful to all.